

PureULTRA PHF-107-V UF Pressure-Driven UF Modules

PureULTRA modules feature Polyvinylidene Fluoride (PVDF) hollow fiber UF membrane that offers high chemical tolerance along with physical robustness. The tight pore size helps in removal of solids, pathogens, and other suspended foulants. The unique PVDF polymer allows the membrane modules to be cleaned aggressively without decline in operating flux and loss of membrane hydrophilicity. The membrane module design and optimum operating sequences provide consistent filtration efficiency and durability. PureULTRA UF modules can be used for a wide range of applications while treating the entire spectrum of feed waters from sea, surface, well, and secondary & tertiary wastewaters – both industrial and municipal.

This product specification sheet provides an overview of relevant technical data regarding PureULTRA modules.

MEMBRANE CHARACTERISTICS

Membrane Polymer	Polyvinylidene Fluoride (PVDF)
Nominal Pore Size	0.025 µm
Membrane Type	Hollow Fiber
Hollow Fiber Diameter OD / ID	1.3 mm / 0.7 mm (0.051 inch / 0.028 inch)

MODULE SPECIFICATIONS

Model	PHF-107-V
Nominal Membrane Area	107 m ² (1152 ft ²)
Housing Material	UPVC
Membrane Potting	Epoxy / PU
Filtration / Backwash Flow Path	Out → In / In → Out
Operating Mode	Dead-End / Cross-Flow
Preservative	Sodium meta-bisulphite

OPERATING PARAMETERS

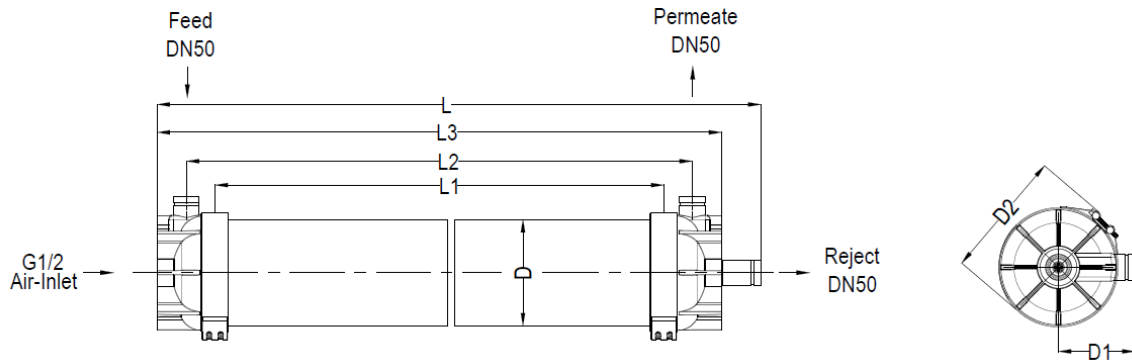
Filtrate Flow Range	3.7 - 12.8 m ³ /h (16.3 - 56.5 gpm)
Maximum Feed Pressure (at 20°C / 68°F)	6.4 bar (92.8 psi)
Maximum Transmembrane Pressure	2.3 bar (33.4 psi)
Maximum Backflush Pressure	2.7 bar (39.2 psi)
Typical Air Scour Rate	5 - 14 m ³ /h (3.0 - 7.1 SCFM)
Maximum Air Scour Pressure	1.2 bar (17.4 psi)
pH Range for Operation	2.0 - 11.0
Temperature Range	1 - 40°C (33.8 - 104°F)

CLEANING PARAMETERS

pH Range	2.0 - 12.0
Maximum Temperature	40°C (104 °F)
Maximum Active Chlorine Concentration	3000 ppm
Maximum Active Chlorine Exposure	>500,000 ppm-hours
Cleaning Chemicals	Sodium Hypochlorite, caustic, hydrochloric acid / sulfuric acid / citric acid



PHYSICAL DIMENSIONS



Dry / Wet Weight	62 kg (137 lb) / 127 kg (280 lb)
Housing Diameter (D)/ Module max. Installation Diameter (D2)	250 mm (9.8 in) / 300mm (11.8")
Module Diameter	250 mm (9.8 in)
Module Length	2360 mm (92.9in)
Feed / Reject Port	2" Victaulic
Permeate Port	2" Victaulic

IMPORTANT INFORMATION

Storage & Handling:

PureULTRA modules must be handled and stored appropriately to ensure proper operation and to prevent membrane damage. Please see the PureULTRA Operation and Maintenance Manual.

Installation & Start-Up:

PureULTRA modules must be installed correctly before start-up. For a detailed installation and start-up procedure, please see the PureULTRA Operation and Maintenance Manual.

Cleaning:

PureULTRA modules must be cleaned routinely via backwash to ensure proper operation and to prevent membrane damage. Please see PureULTRA Product Manual.

MANN+HUMMEL Water & Fluid Solutions reserves the right to change specifications without prior notification.

Contact

Europe

Germany: +49 611 962 6001
 Italy: +39 0721 1796201
 info.wfs@mann-hummel.com

Americas

USA: +1 805 964 8003
 sales.mnus@microdyn-nadir.com

Asia

Singapore: +65 6457 7533
 China: +86 10 8413 9860
 waterchina@mnn-hummel.com